

The Glenmont

2740 Square Feet

Total width: 58'-0"

Total depth: 50'-0"



**First Floor Master
4 Bedrooms
2 1/2 Baths**

Features

**9' first floor ceilings &
2 story foyer with angled
staircase*

**First floor master bedroom
& 3 large bedrooms plus
loft on second floor*

**Vaulted kitchen with island
and walk-in pantry*

**First floor laundry room*



Office/Model Home:

10532 Cleveland Ave, NW

Uniontown, OH 44685

(330) 305-6700

www.DHHonline.com

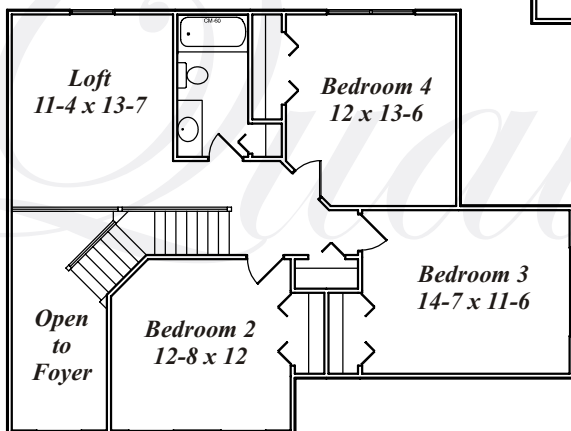
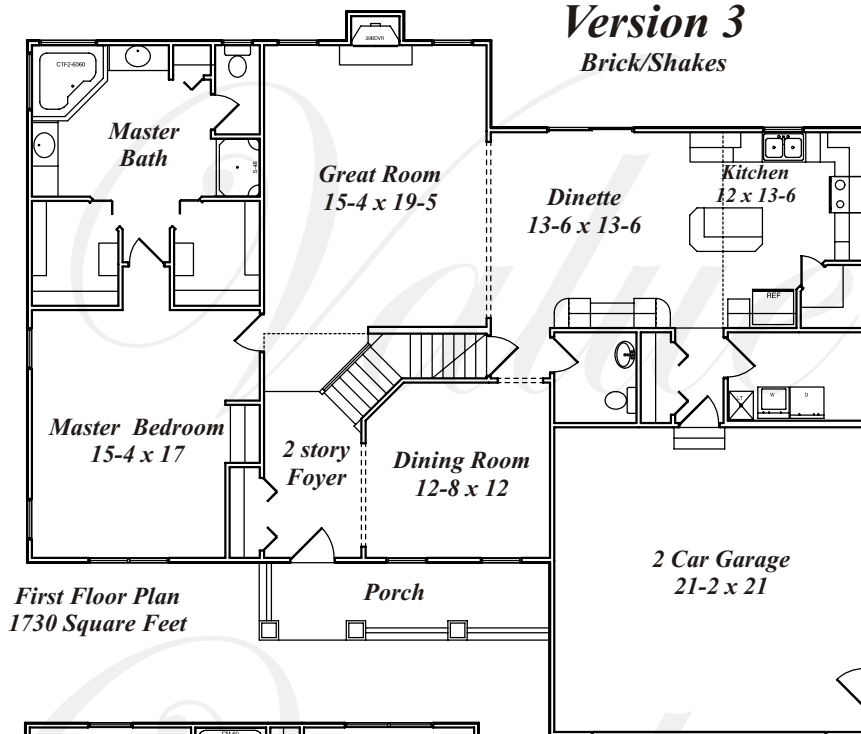
This brochure is for illustrative purposes only and is not part of any legally binding contract.

Due to continually updated building codes and design improvements, dimensions may vary slightly. See sales associate for current floor plan dimensions.

Note: This plan is copyrighted by Dutch Heritage Homes. Federal copyright law prohibits any unauthorized use of this plan or any part thereof. Violators of the copyright law are subject to prosecution to the extent of the law.

Version 3

Brick/Shakes



The Glenmont

2740 Square Feet



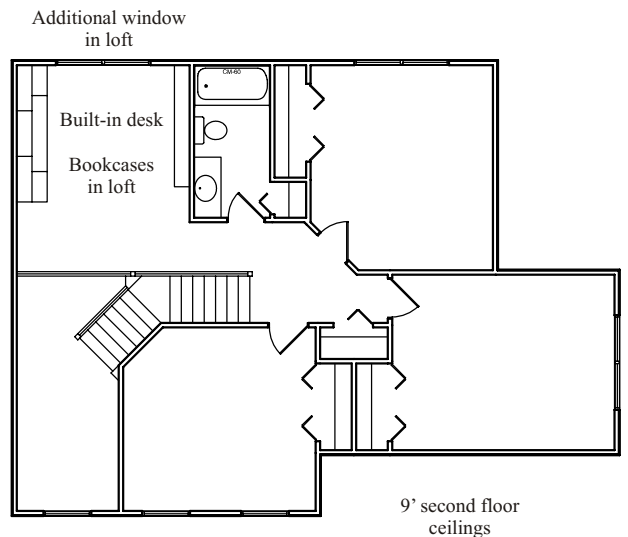
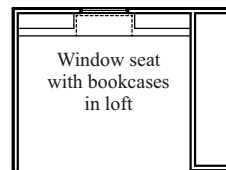
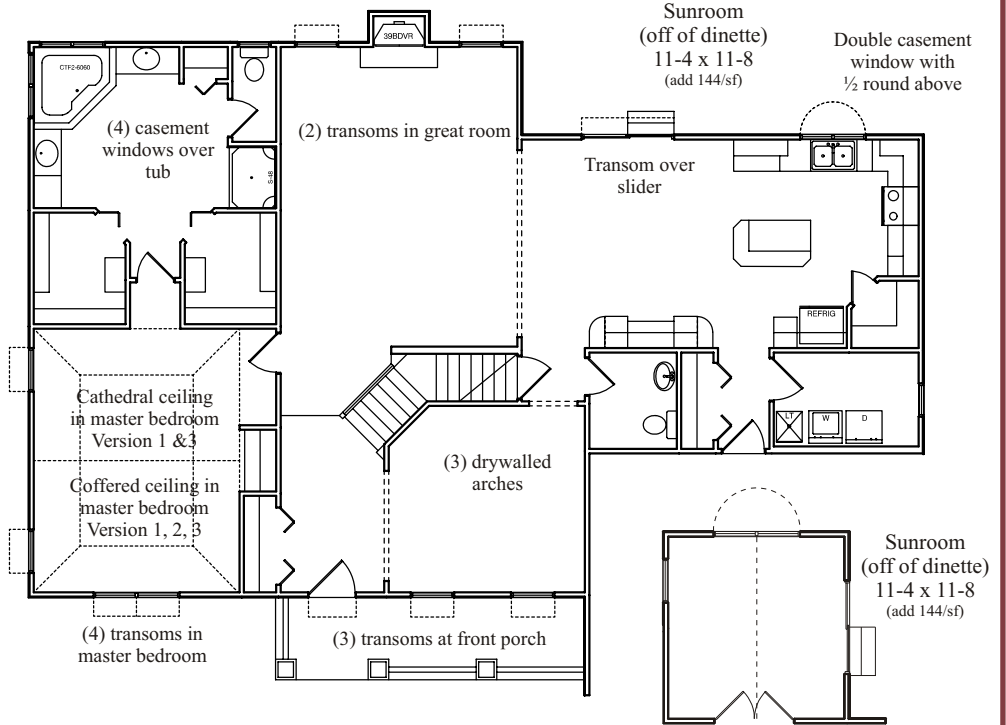
Office/Model Home:
10532 Cleveland Ave, NW
Uniontown, OH 44685
(330) 305-6700
www.DHHonline.com



Version 1
Brick/Shakes/Siding



Version 2
Stone/Shakes



Options

First Floor

- (4) transoms in master bedroom
- Cathedral ceiling in master bedroom (version 1 & 3)
- Coffered ceiling in master bedroom (version 1, 2, 3)
- (4) casement windows above master bath tub (remove (2) awning windows)
- (2) transoms over great room windows
- Transom over slider in dinette
- Sunroom (incl cath clg & wire for clg fan/light) (add 144/SF)
- Double casement window with 1/2 round above in kitchen (remove double hung window)
- (3) drywall arches
- Window grids in all windows & sliding glass doors
- (3) transoms at front -
 - (1) over front door, (2) over dining room windows

Second Floor

- 9' second floor ceilings
- (1) additional window in loft
- Built-in desk in loft
- Built-in bookcases in loft
- Operable window seat with flanking bookcases in loft